

# West River Memorial Park Urban Oases

200 Derby Ave, New Haven, CT

As part of the New Haven Harbor Urban Refuge Partnership, habitat improvements are taking place at New Haven parks, schools and other urban green spaces. Native trees, shrubs, and flowers have been planted to provide cover, food, and habitat for wildlife and a place to learn, relax, and connect with nature for people. Audubon Connecticut is looking for help monitoring birds at these *Urban Oases* to determine whether habitat restoration is working.

To participate, visit an Urban Oases and keep a record of all the birds you see or hear. Then enter your observations for **just the demonstration site** into [www.eBird.org](http://www.eBird.org). You can visit as many times as you'd like, at any time of the day. Mornings, particularly in Apr.-May and Aug.-Oct. when migrating birds will be using the sites, are recommended.

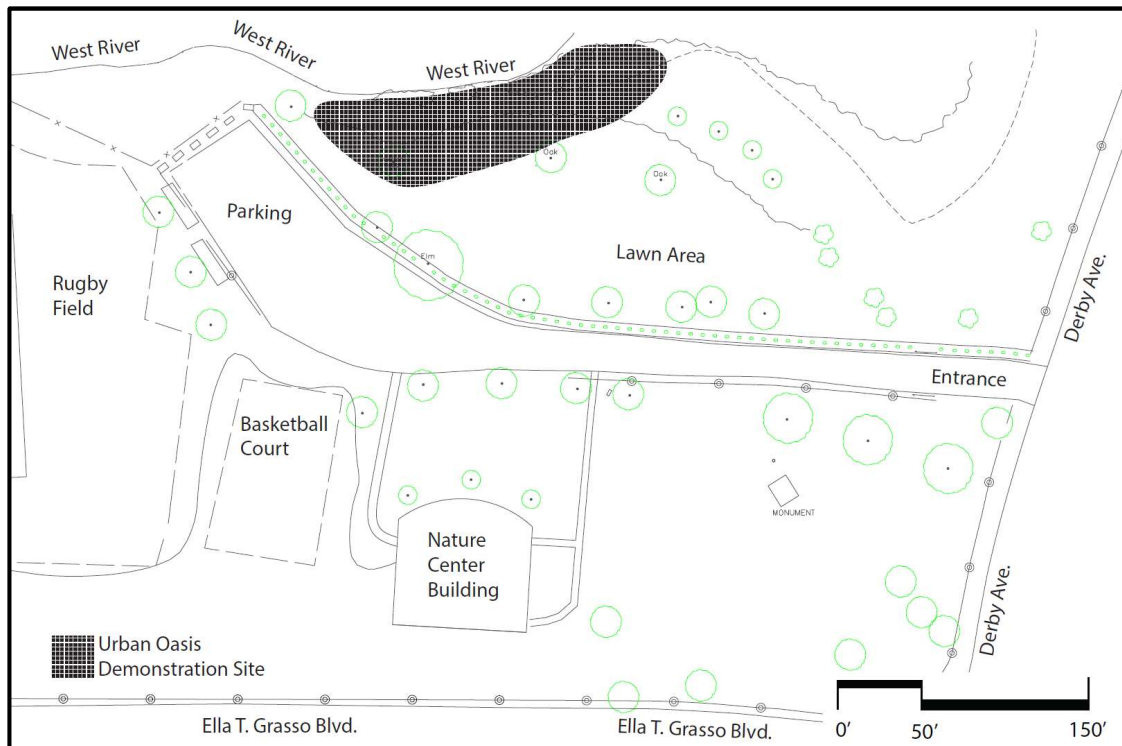


**Driving and Parking Directions for West River Memorial Park:** Coming from the West, take the Merritt Parkway to Exit 57 and merge onto Rte 34 E (Derby Ave). The entrance to West River Memorial Park will be on the right in 4.3 miles, just after the Connecticut Open.

Coming from the North, take I-91 to exit 1 for Route 34 W. Stay on Rte 34/N. Frontage Road for 1.9 miles, then take a right onto Ella T. Grasso Blvd. After 0.2 miles, take a left onto Derby Ave. The parking lot for West River Memorial Park will be immediately on the left.

Coming from the East, take I-95 to exit 47 for Rte 34 W, then follow the above directions.

**Getting to the Demonstration Site:** The Urban Oases is located directly across from the Barnard Nature Center (stop in and check out the Osprey Cam) along the shore of the West River.



**When entering data into eBird, choose the hotspot: West River Memorial Park Urban Oases**